


Verkehrssituation entlang des Nordrings  
- Vorschlag zur Beleuchtung



OSTBEVERN  
Natürlich vielseitig

np

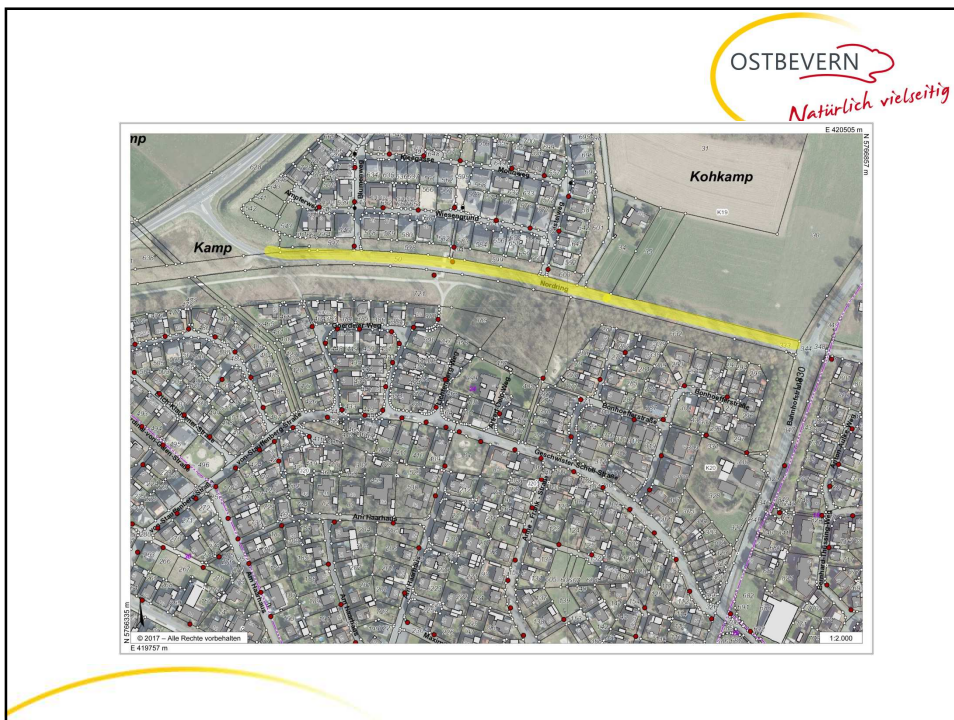
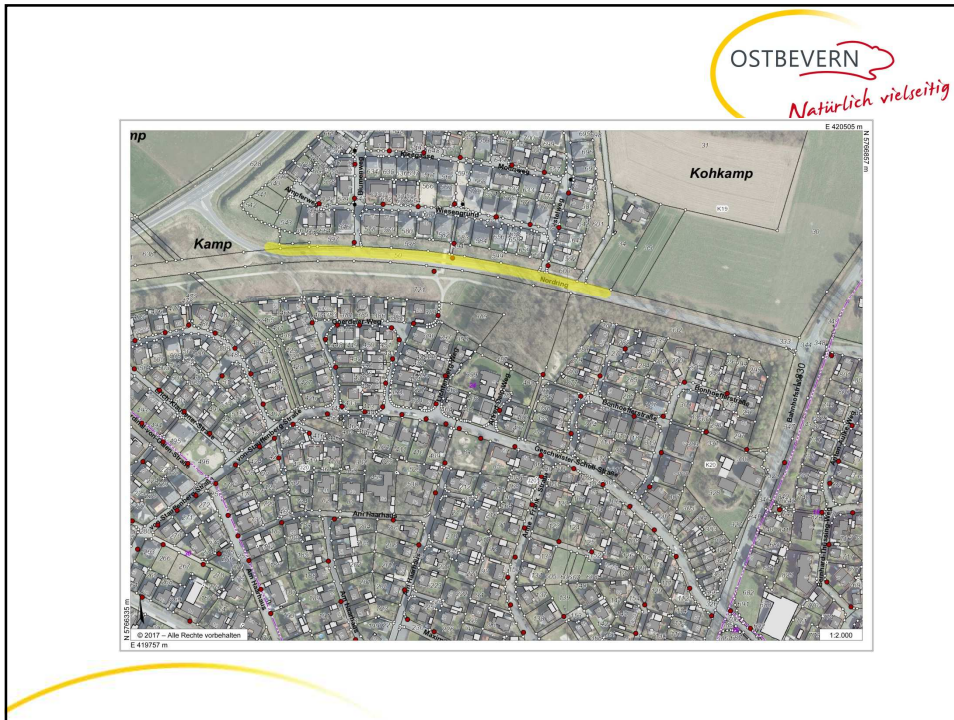
Kamp

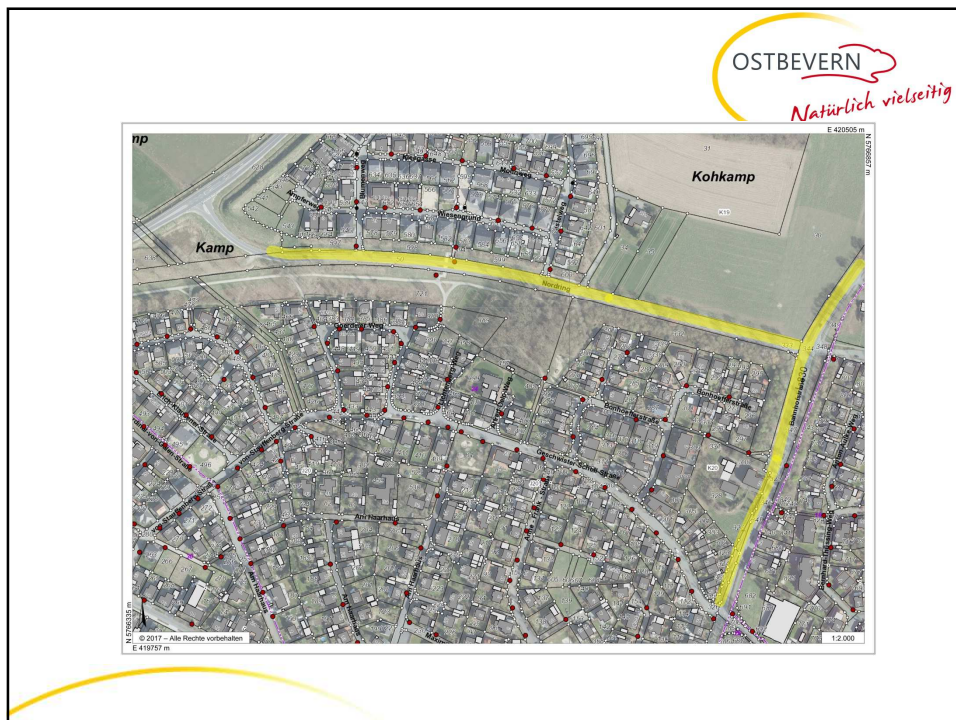
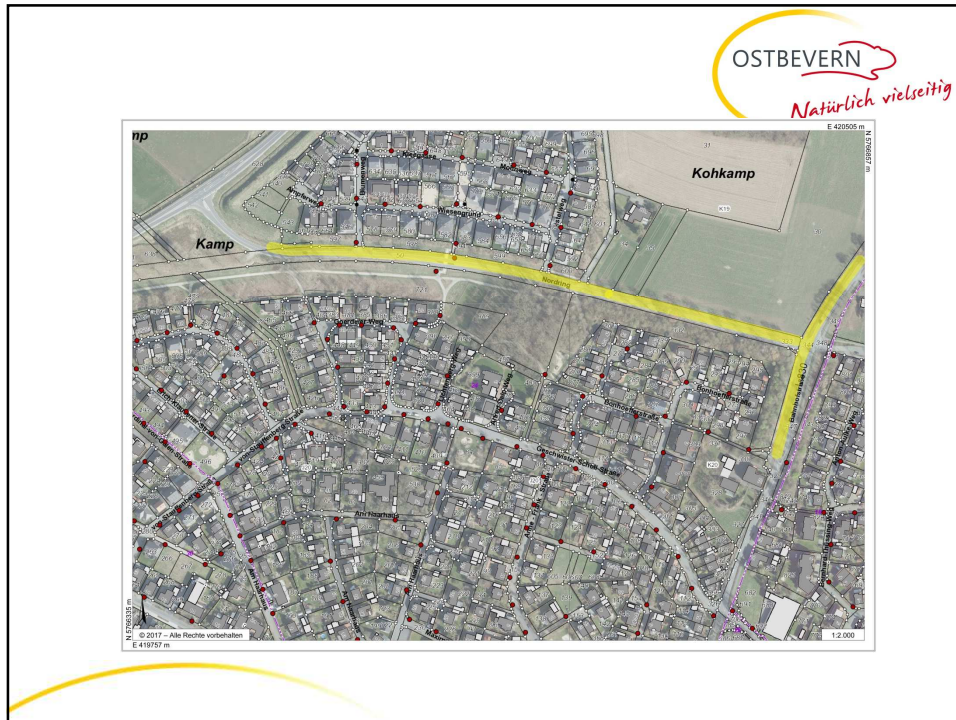
Kohkamp

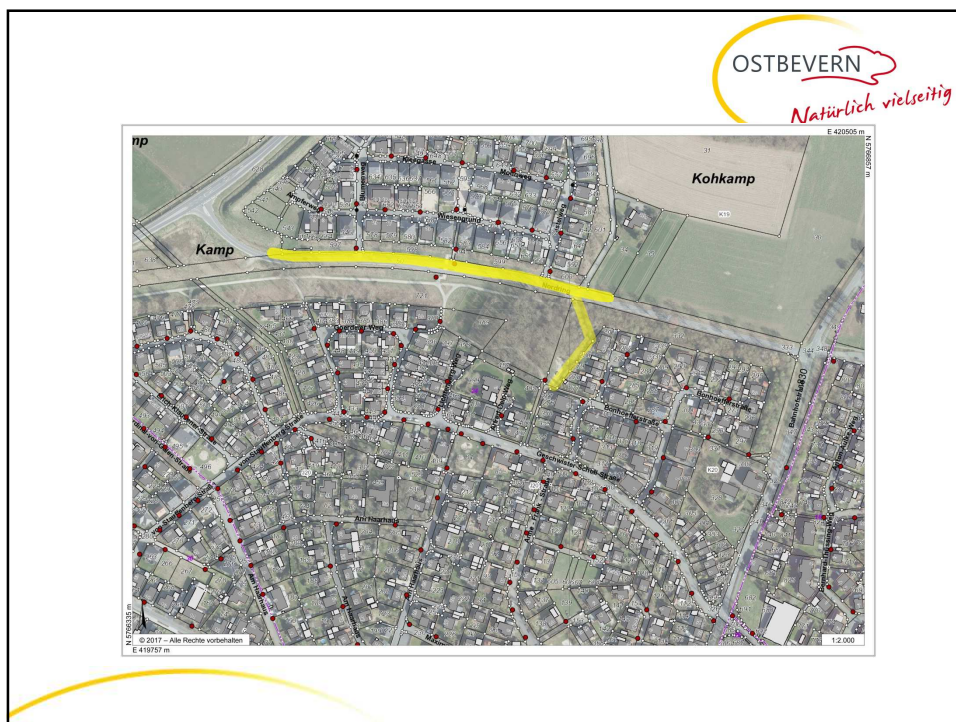
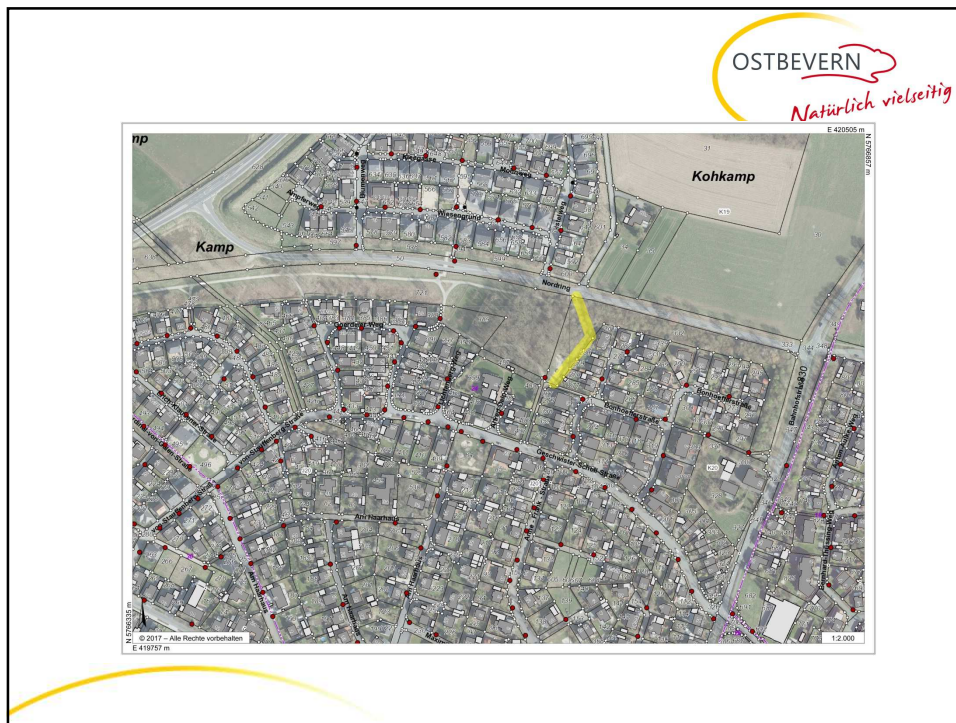
Worling

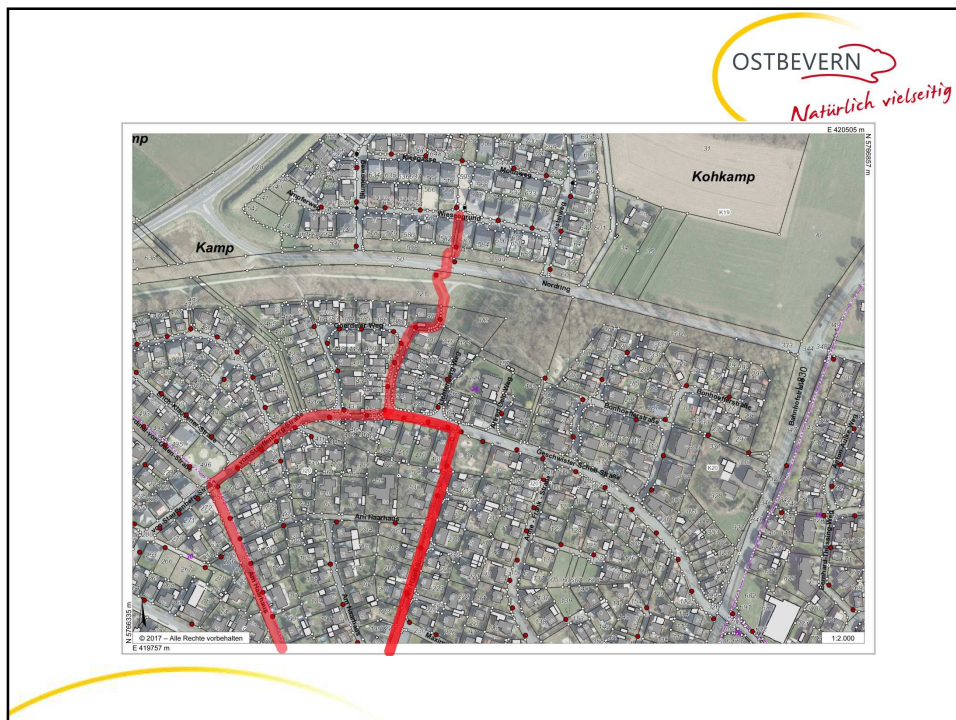
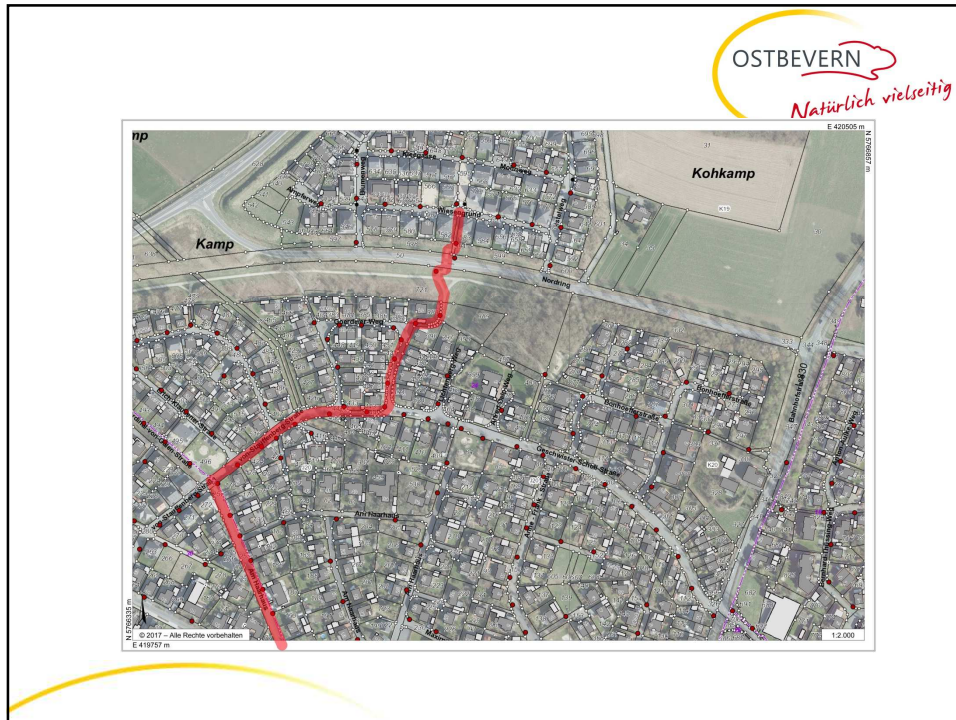
1:2.000

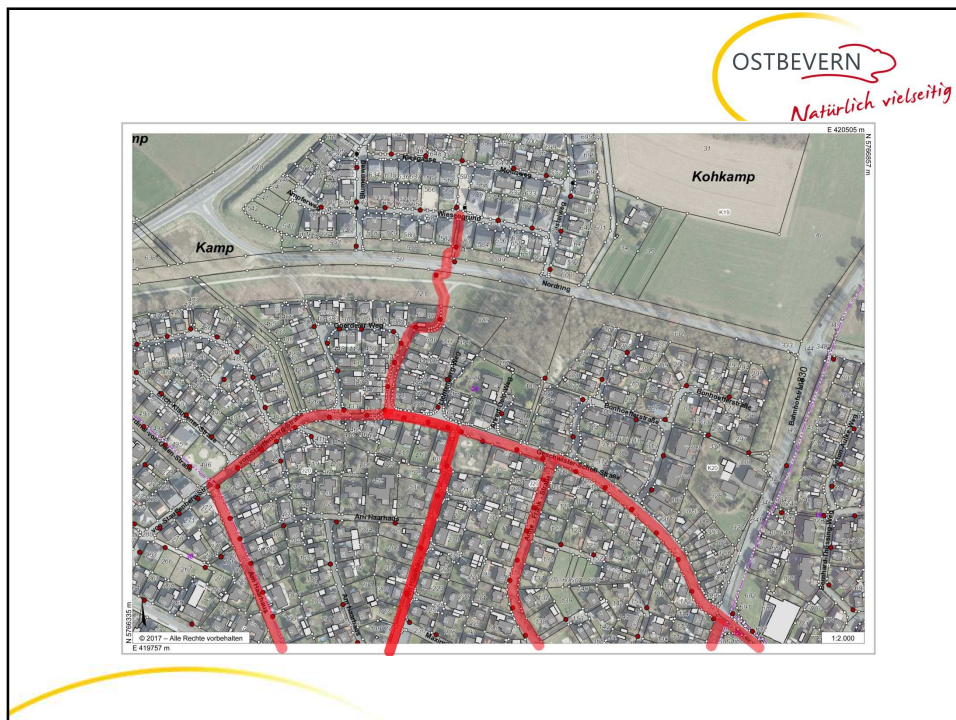
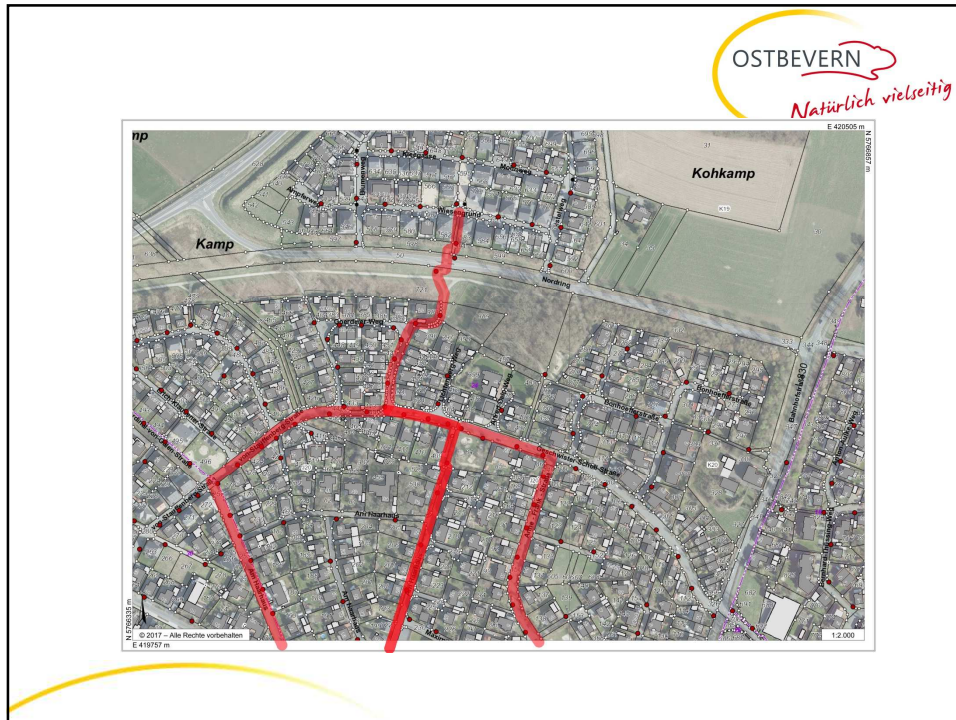
© 2017 - Alle Rechte vorbehalten  
E 419757 m














<u>Kostenschätzung:</u>	
Nordring entlang Baugebiet	25.000 €
Nordring vom Baugebiet bis L 830	17.500 €
L 830 bis Querungshilfe	24.500 €
L 830 von Querungshilfe bis Engelstraße	10.500 €
3 Leuchten von Nordring bis Bonhoefferstraße	7.500 €
Nordring entlang Baugebiet + von Nordring bis Bonhoefferstraße	32.500 €

