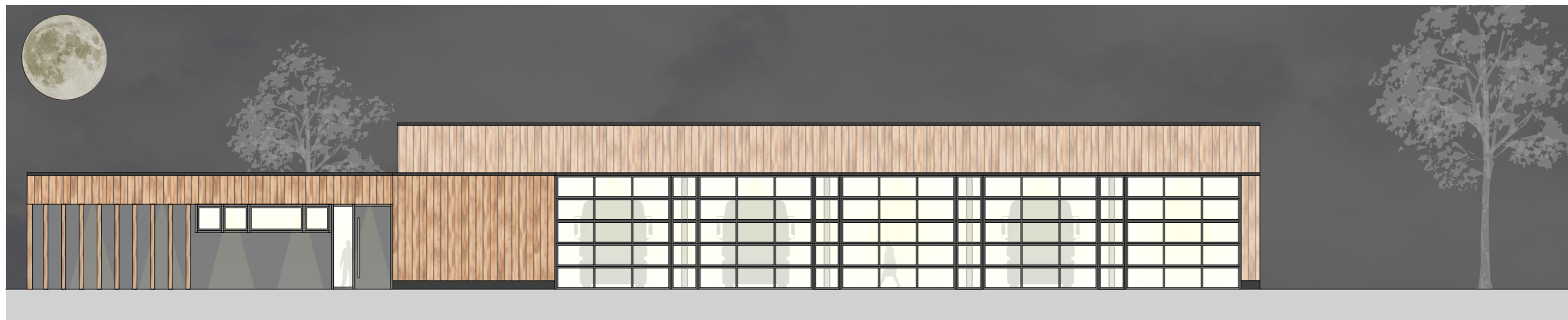




Gemeinde  
Ostbevern

# Neubau Feuerwehr-Gerätehaus, Ostbevern-Brock Neubau Malteser-Gerätehaus, Ostbevern-Brock

17.01.2019

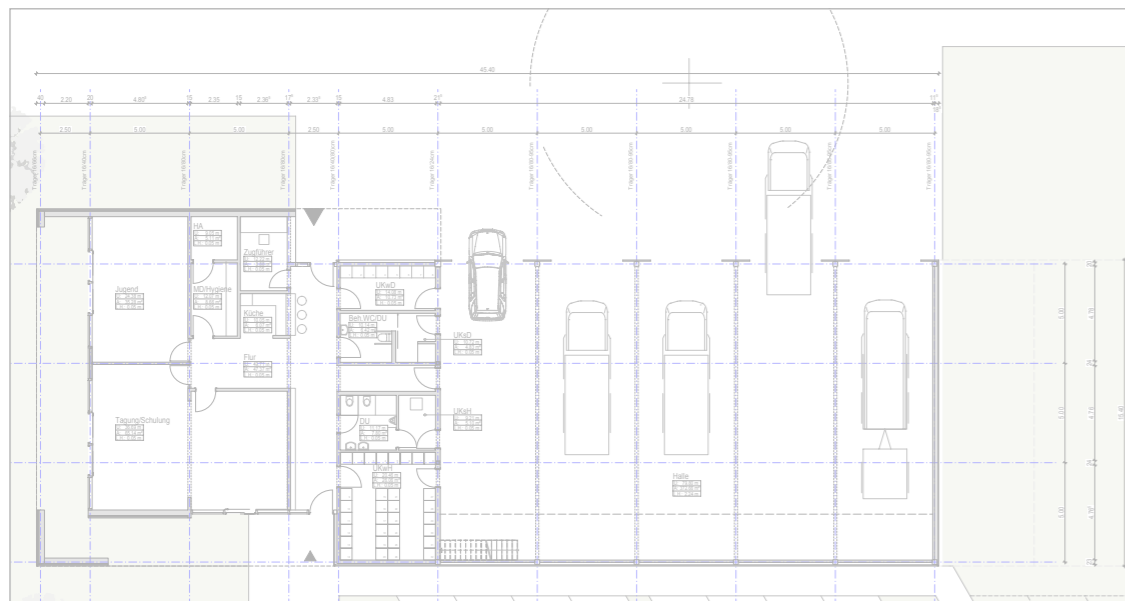
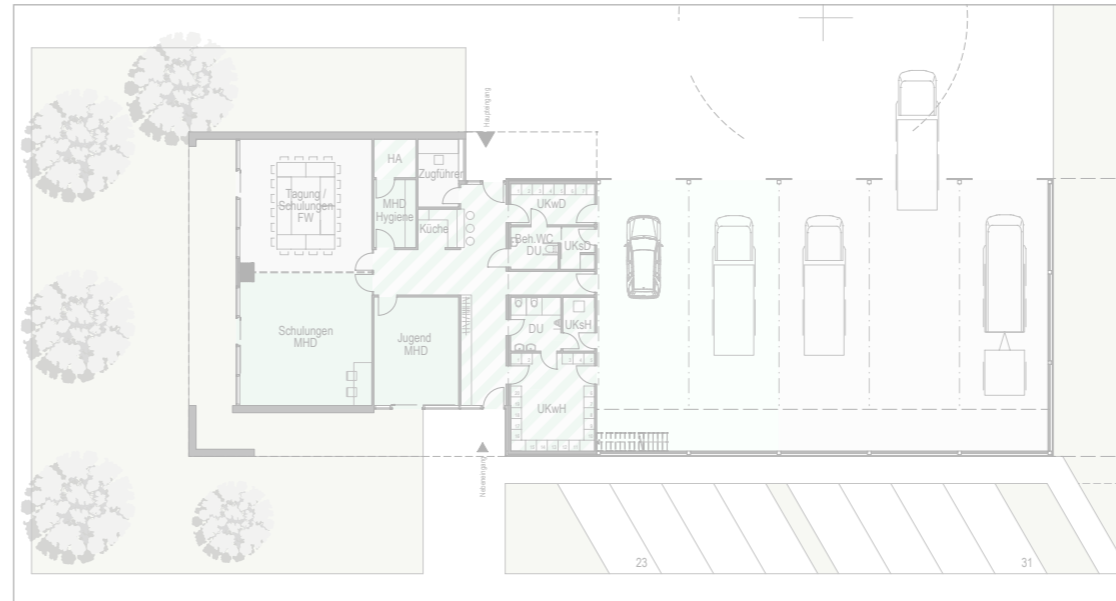
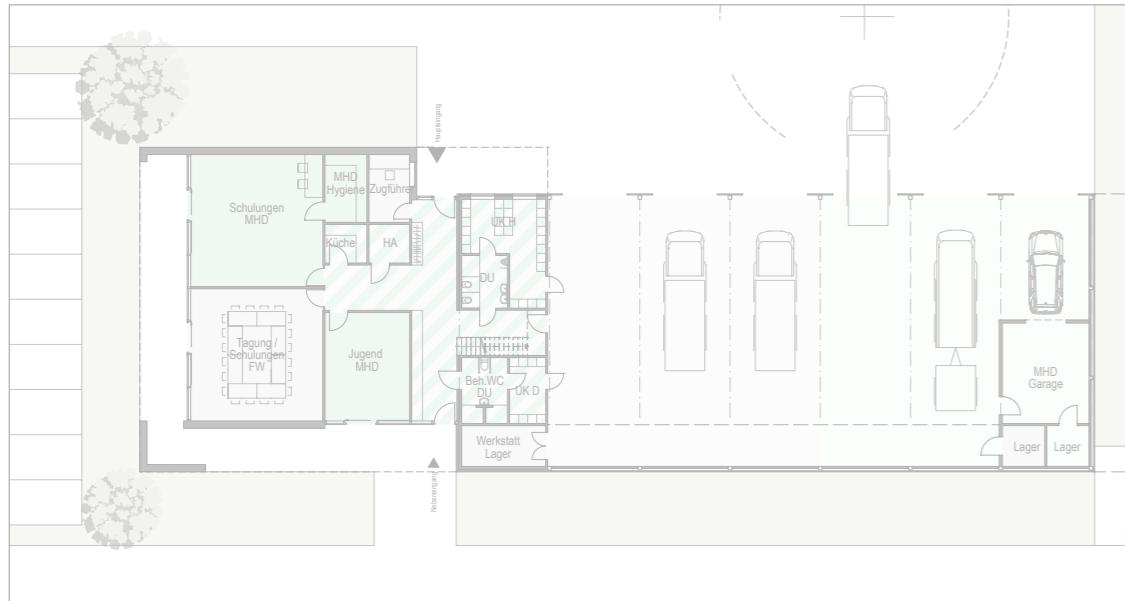
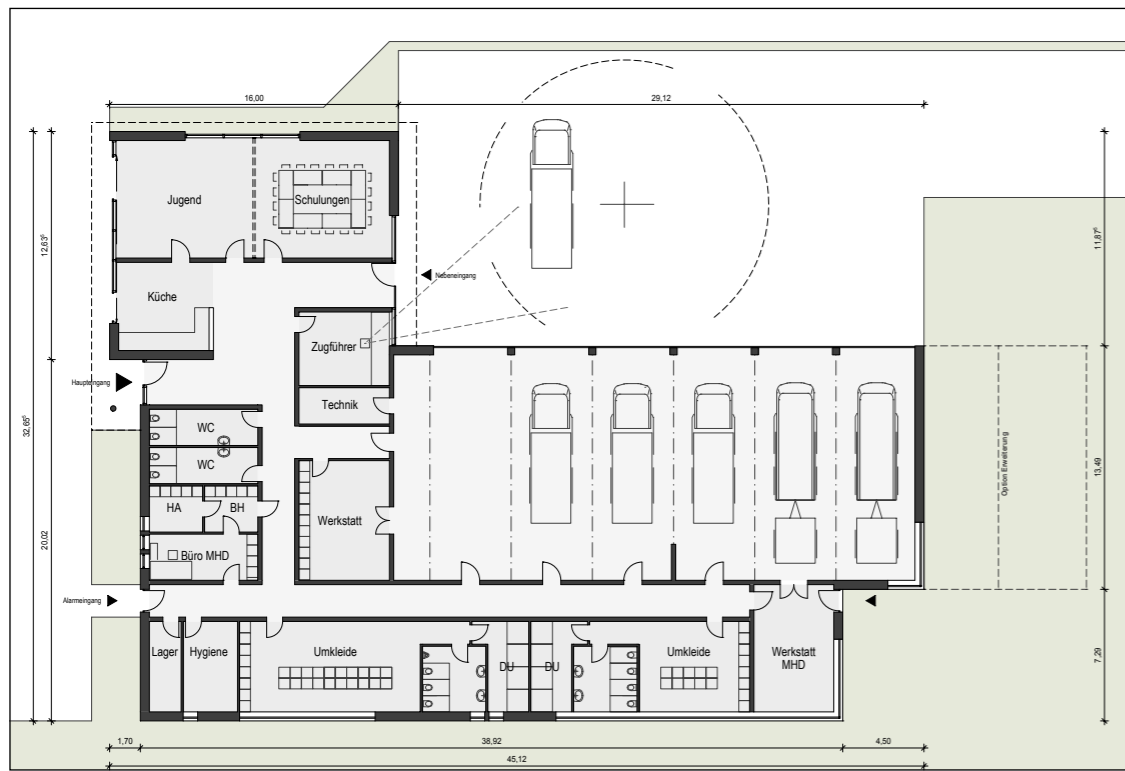




Gemeinde  
Ostbevern

# BGF – Entwicklung

17.01.2019



BGF Fläche Entwicklung

Stand 11.10.2017 - 1095 qm

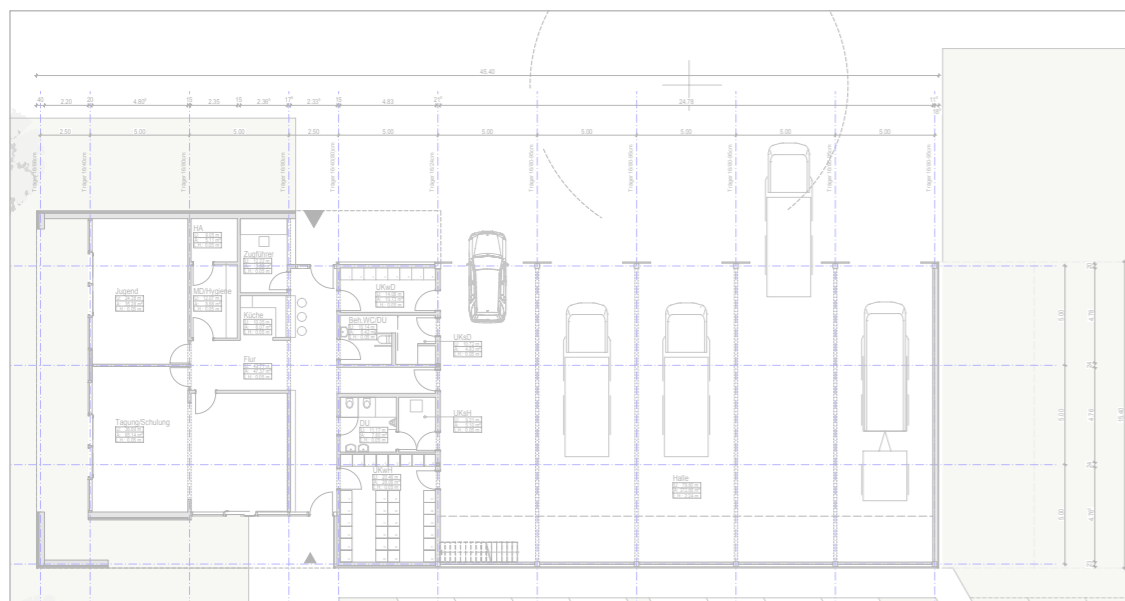
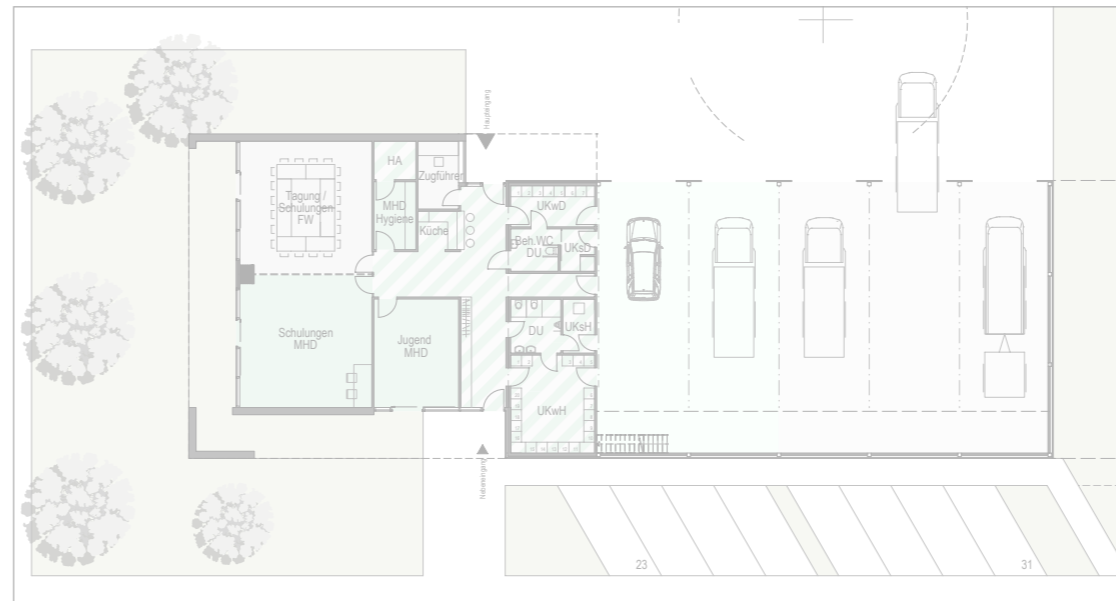
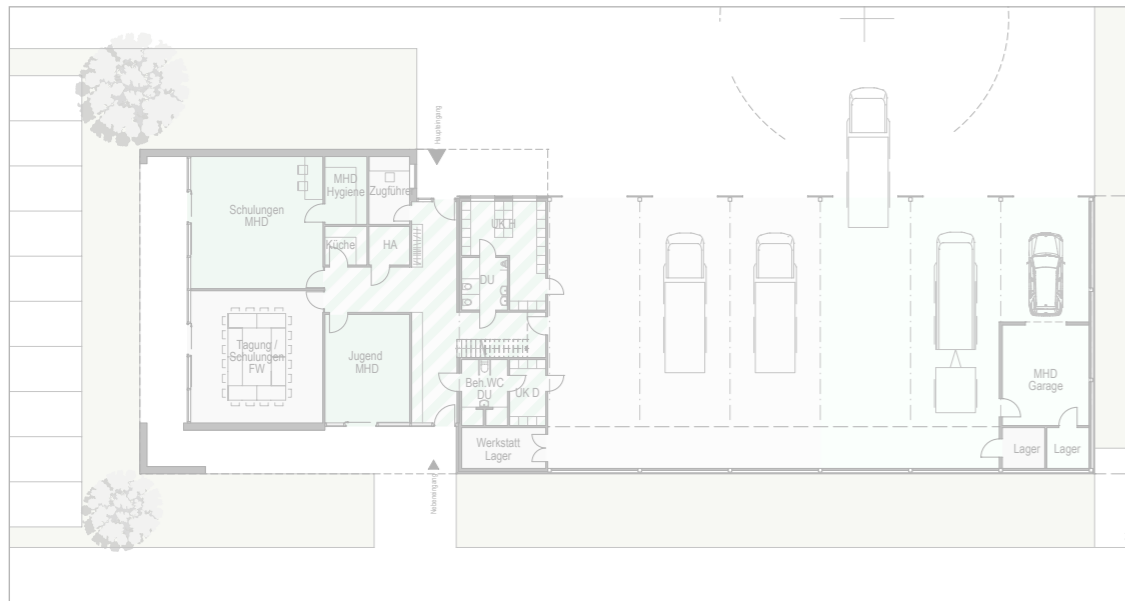
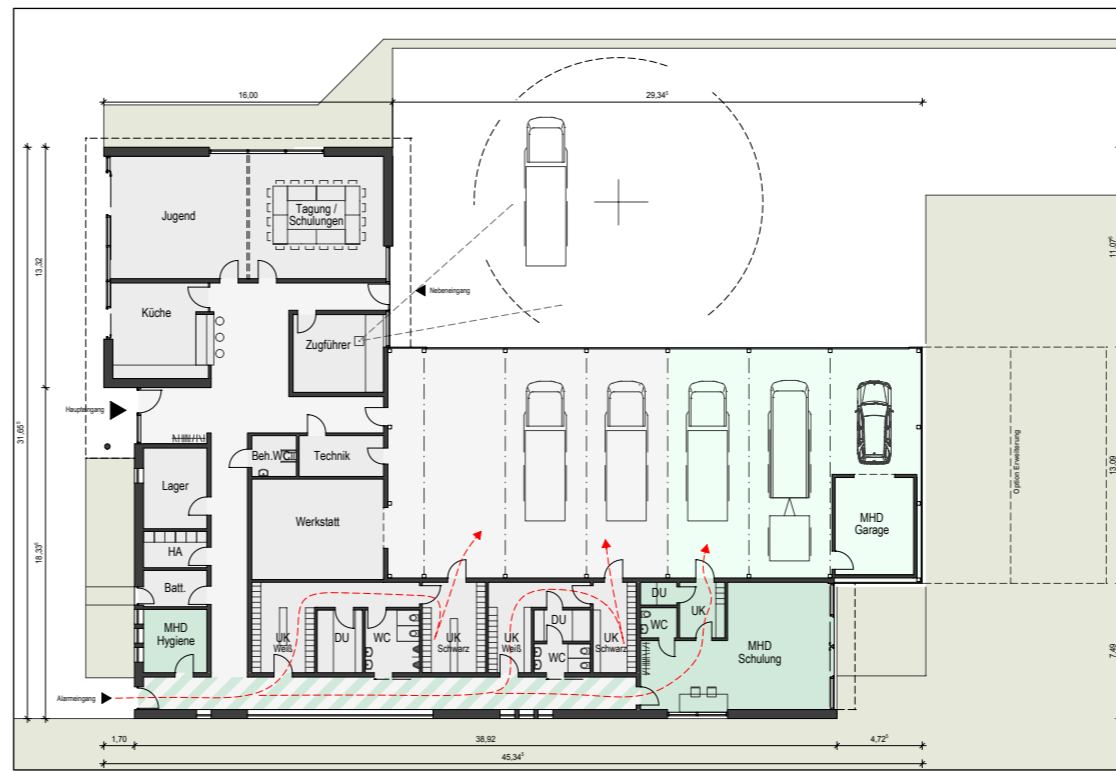
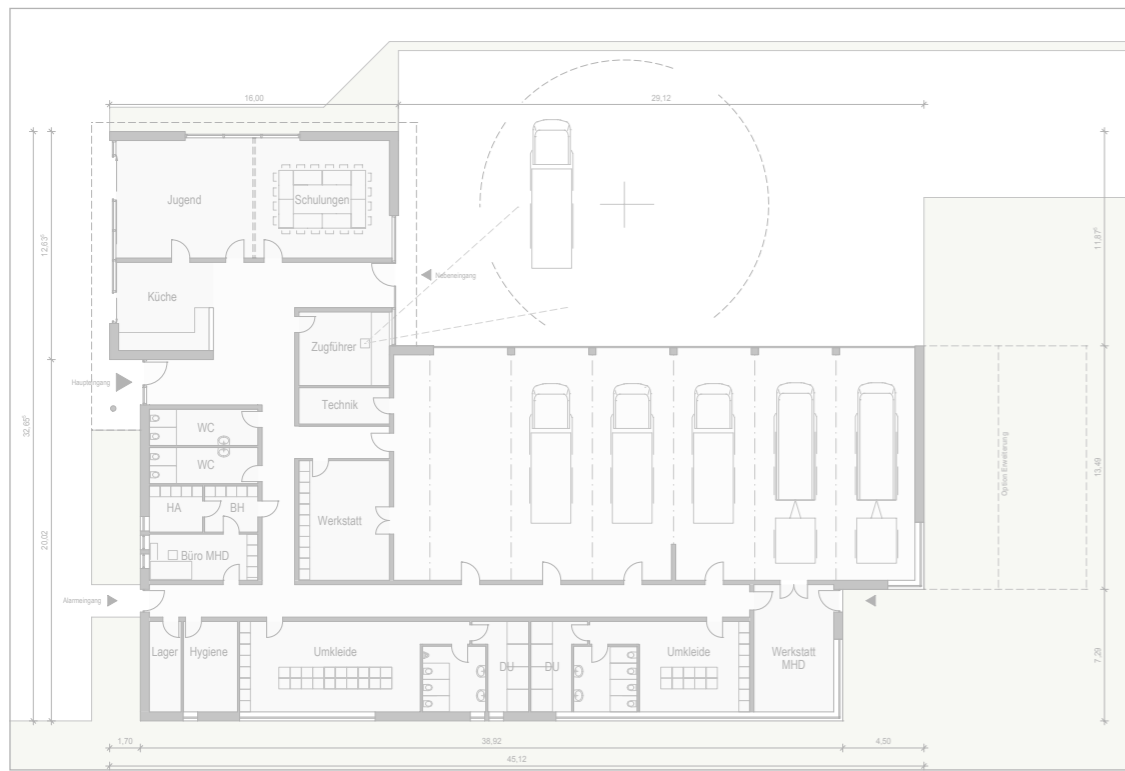
Stand 26.10.2017

Stand 24.01.2018

Stand 26.01.2018

Stand 27.09.2018

17.01.2019



### BGF Fläche Entwicklung

Stand 11.10.2017 – 1095 qm

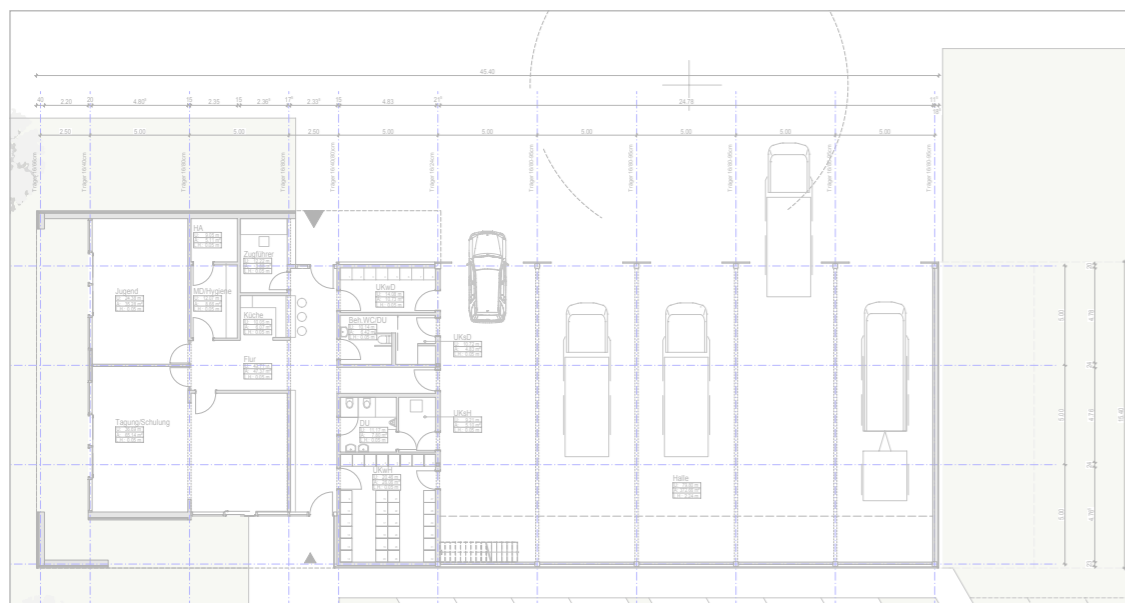
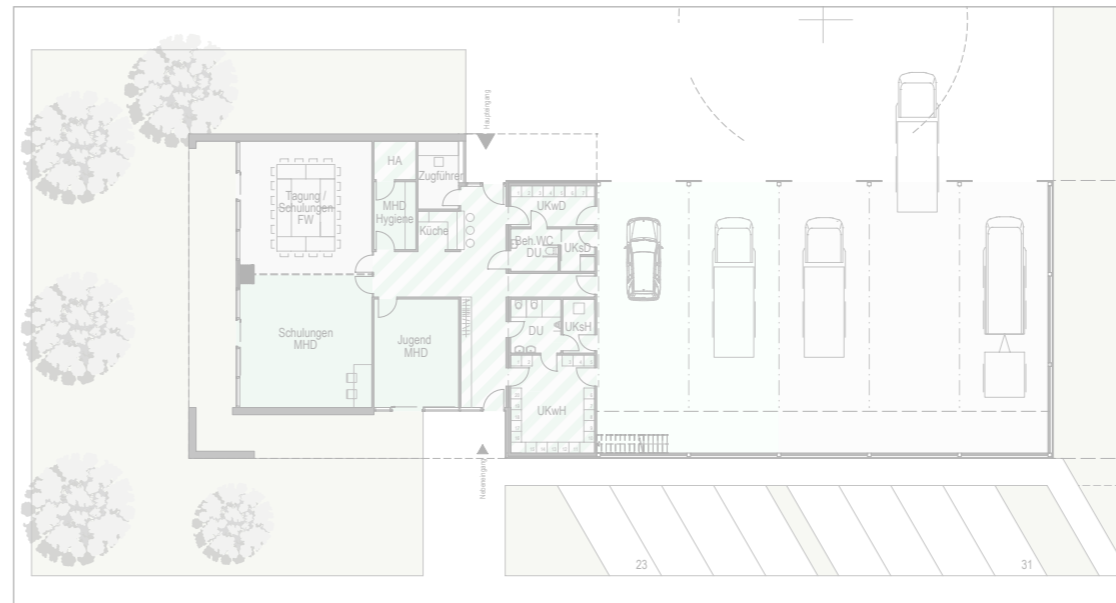
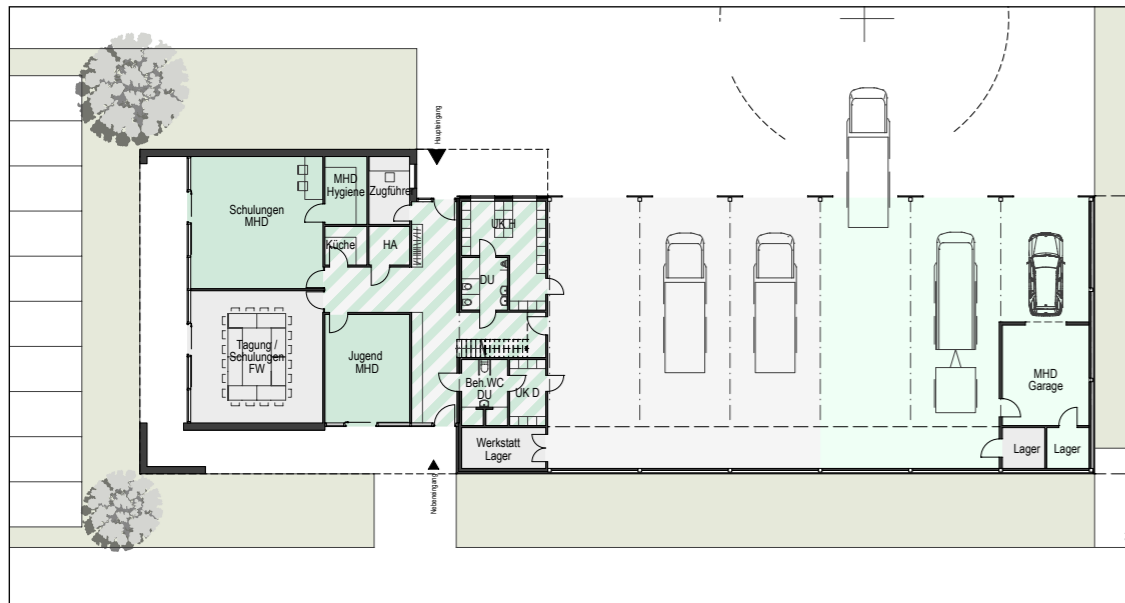
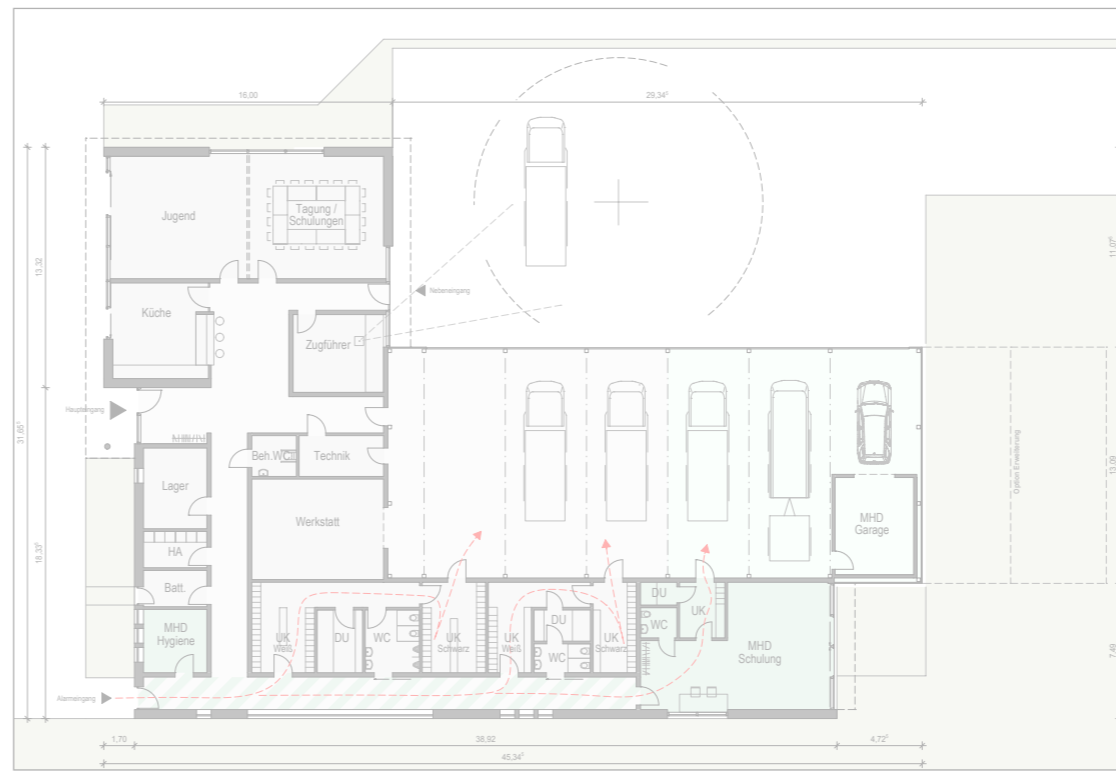
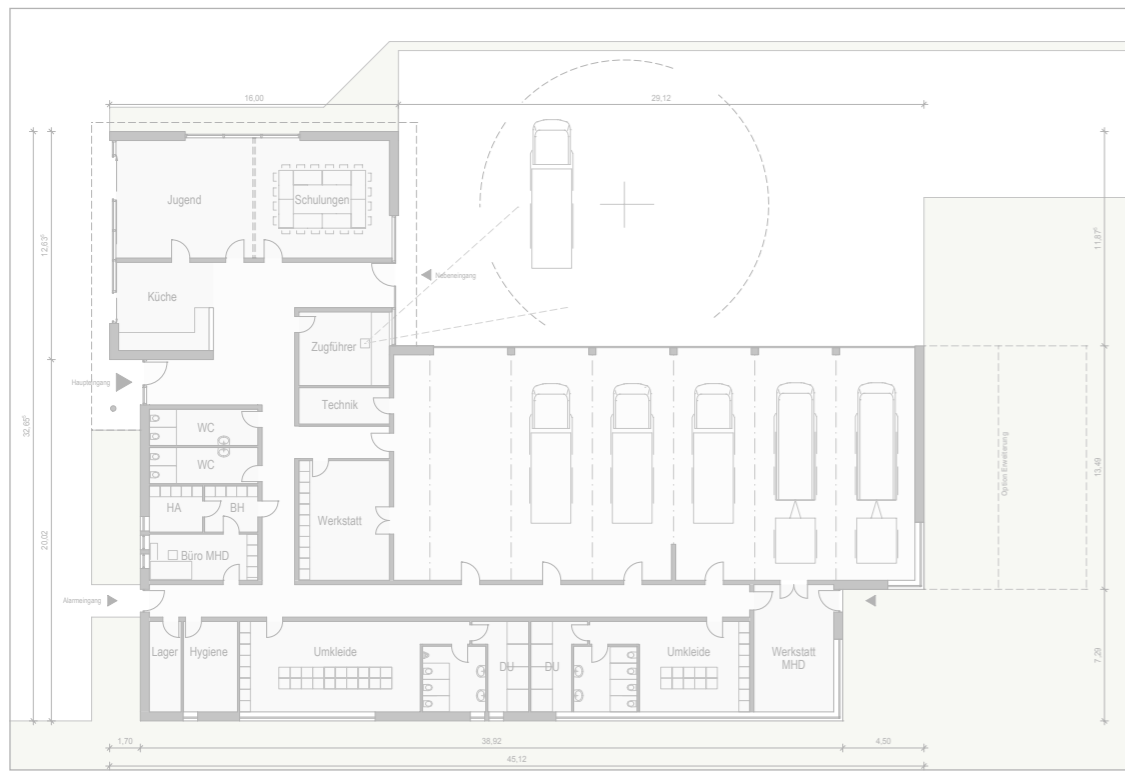
Stand 26.10.2017 – 1095 qm

Stand 24.01.2018

Stand 26.01.2018

Stand 27.09.2018

17.01.2019



### BGF Fläche Entwicklung

Stand 11.10.2017 – 1095 qm

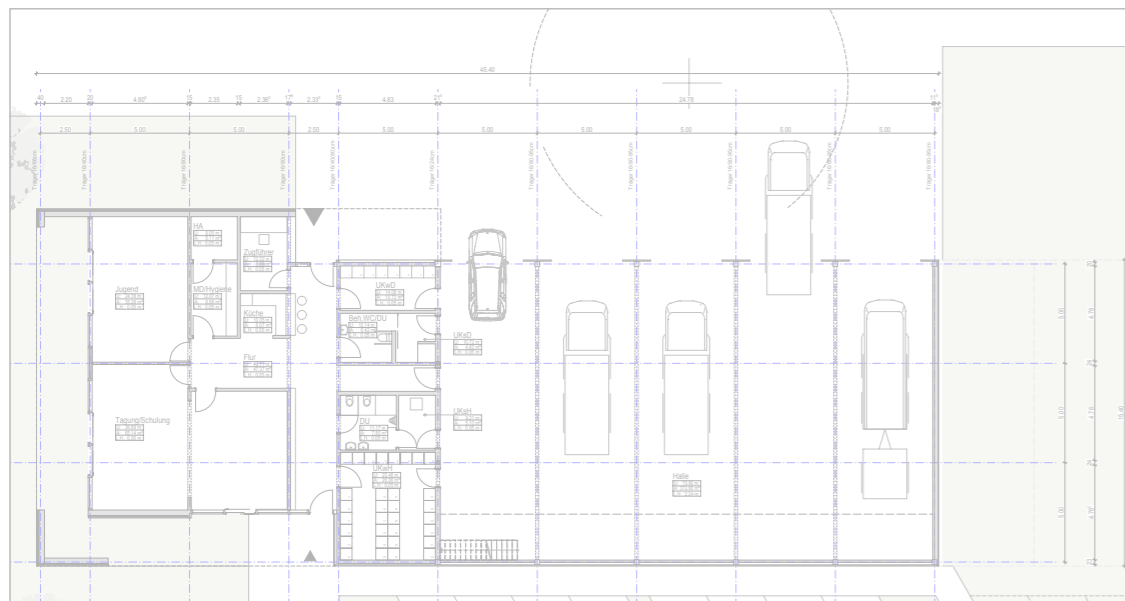
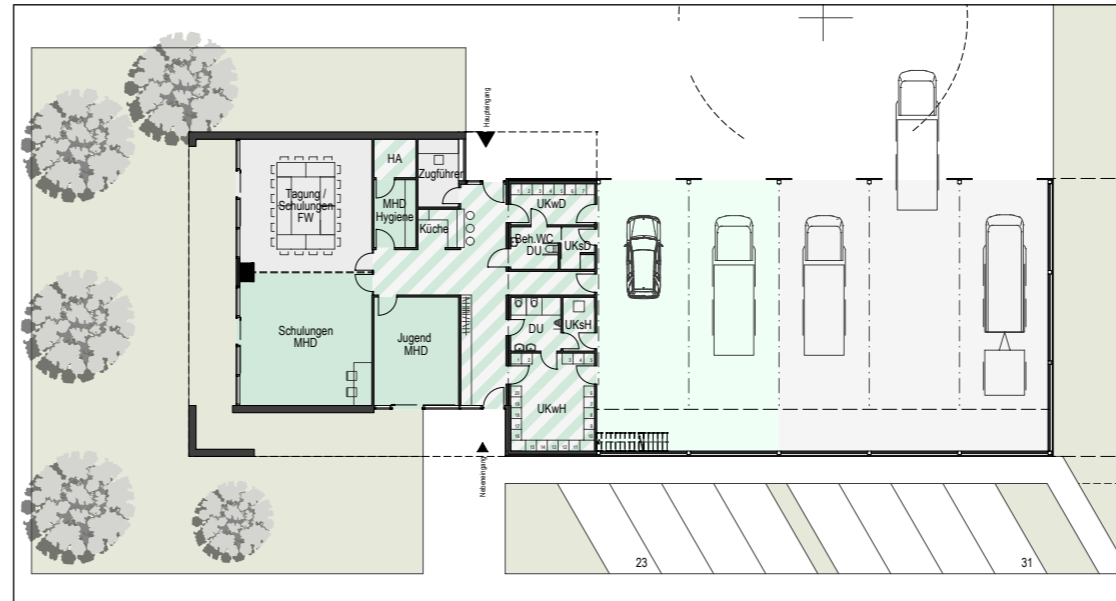
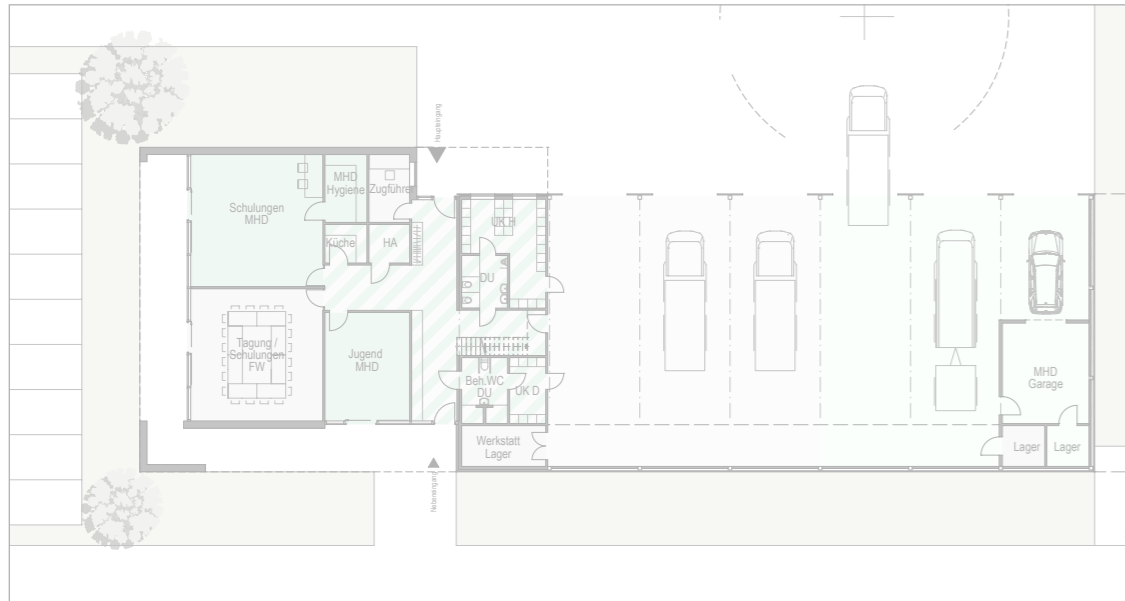
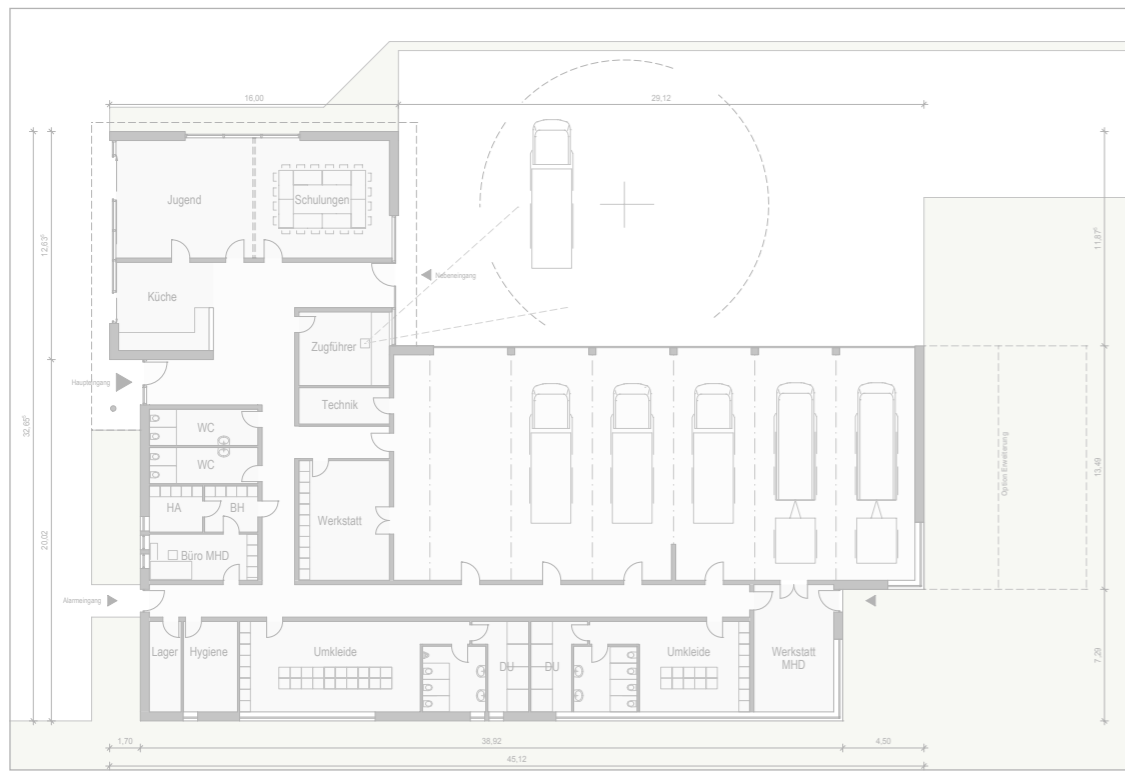
Stand 26.10.2017 – 1095 qm

Stand 24.01.2018 – 870 qm

Stand 26.01.2018

Stand 27.01.2018

17.01.2019



### BGF Fläche Entwicklung

Stand 11.10.2017 - 1095 qm

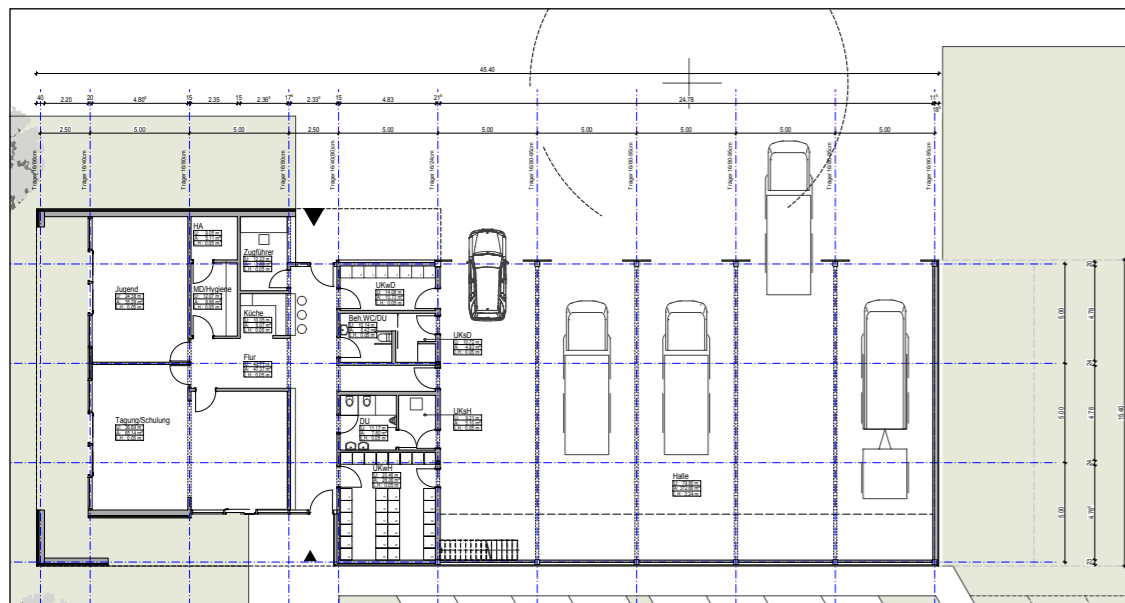
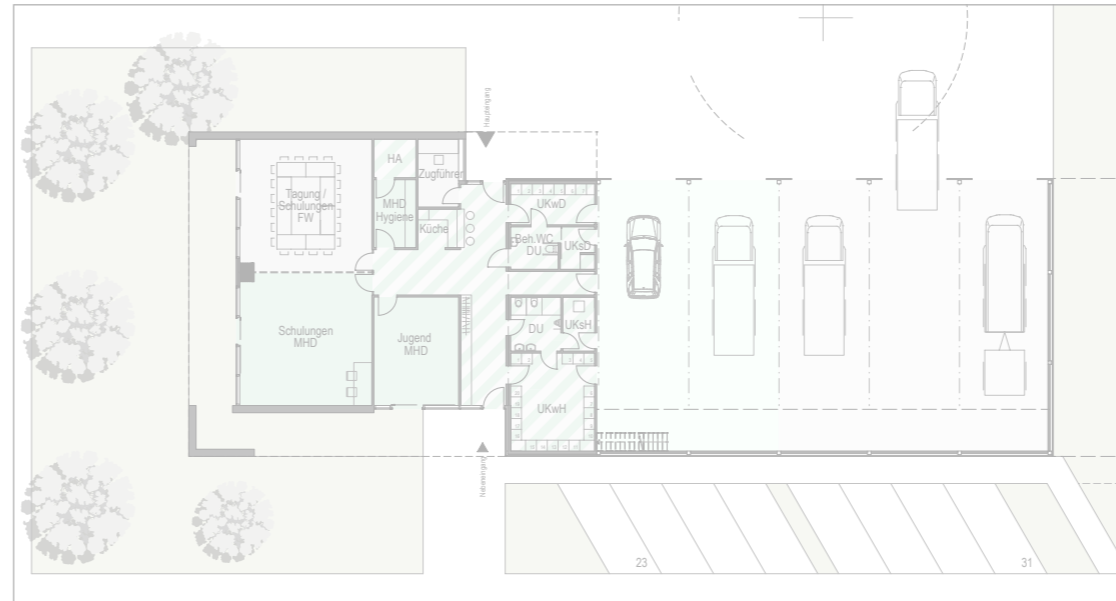
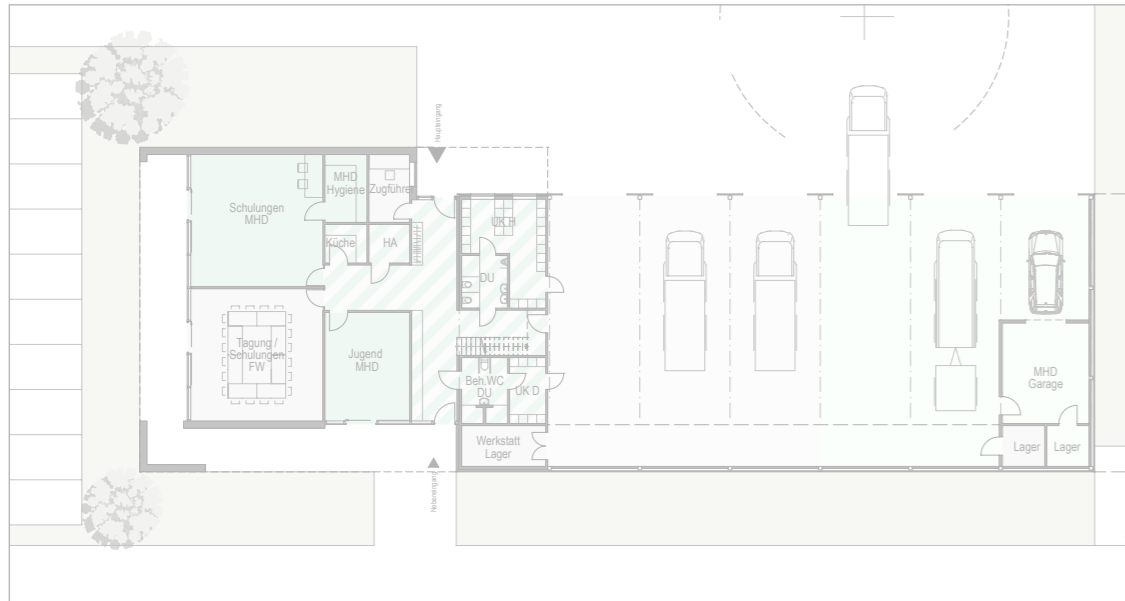
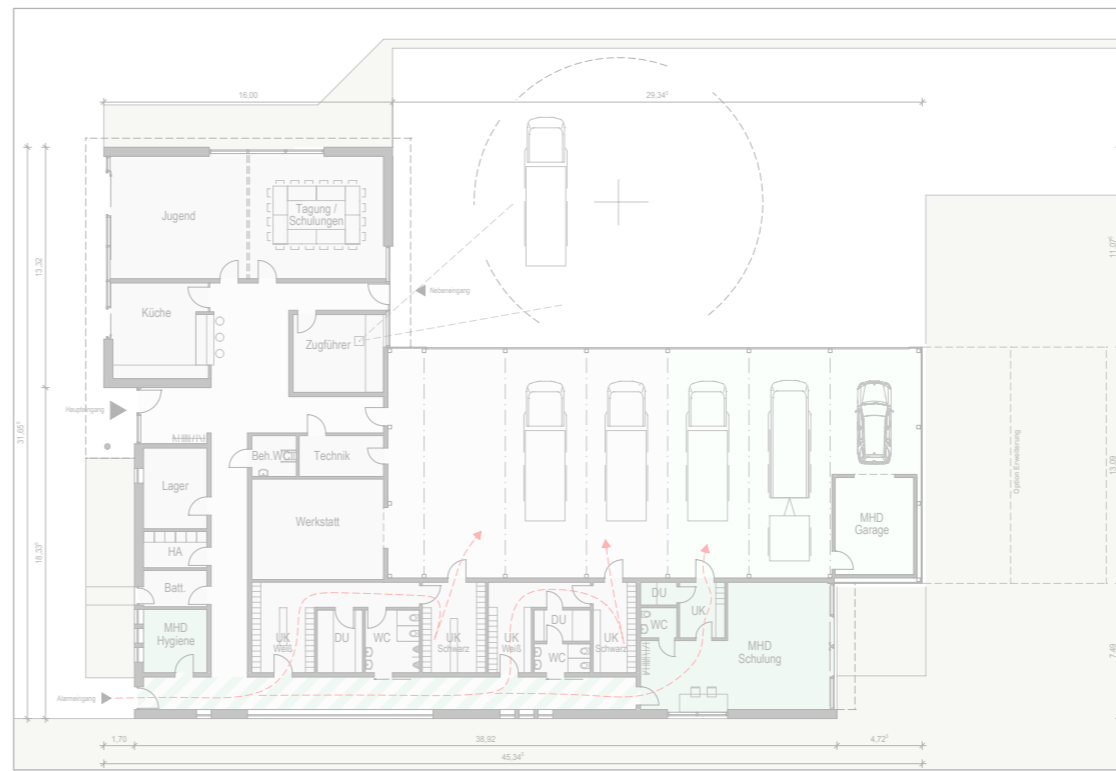
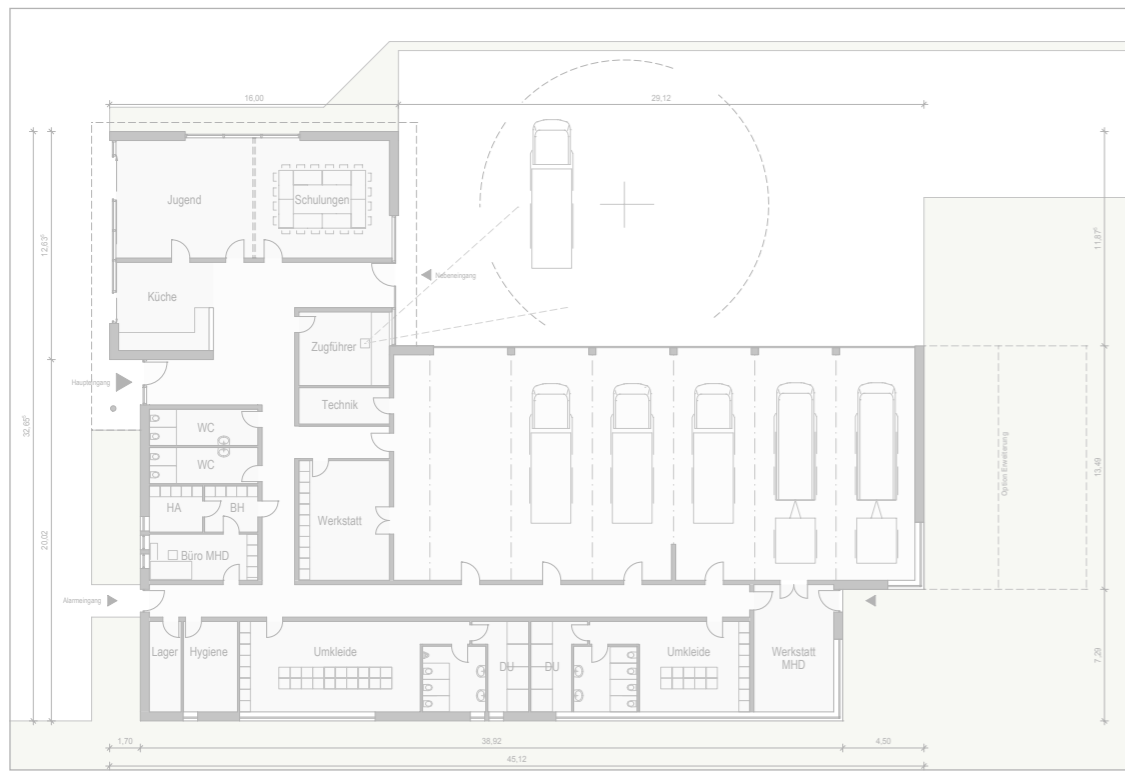
Stand 26.10.2017 - 1095 qm

Stand 24.01.2018 - 870 qm

Stand 26.01.2018 - 796 qm

Stand 27.09.2018

17.01.2019



### BGF Fläche Entwicklung

Stand 11.10.2017 – 1095 qm

Stand 26.10.2017 – 1095 qm

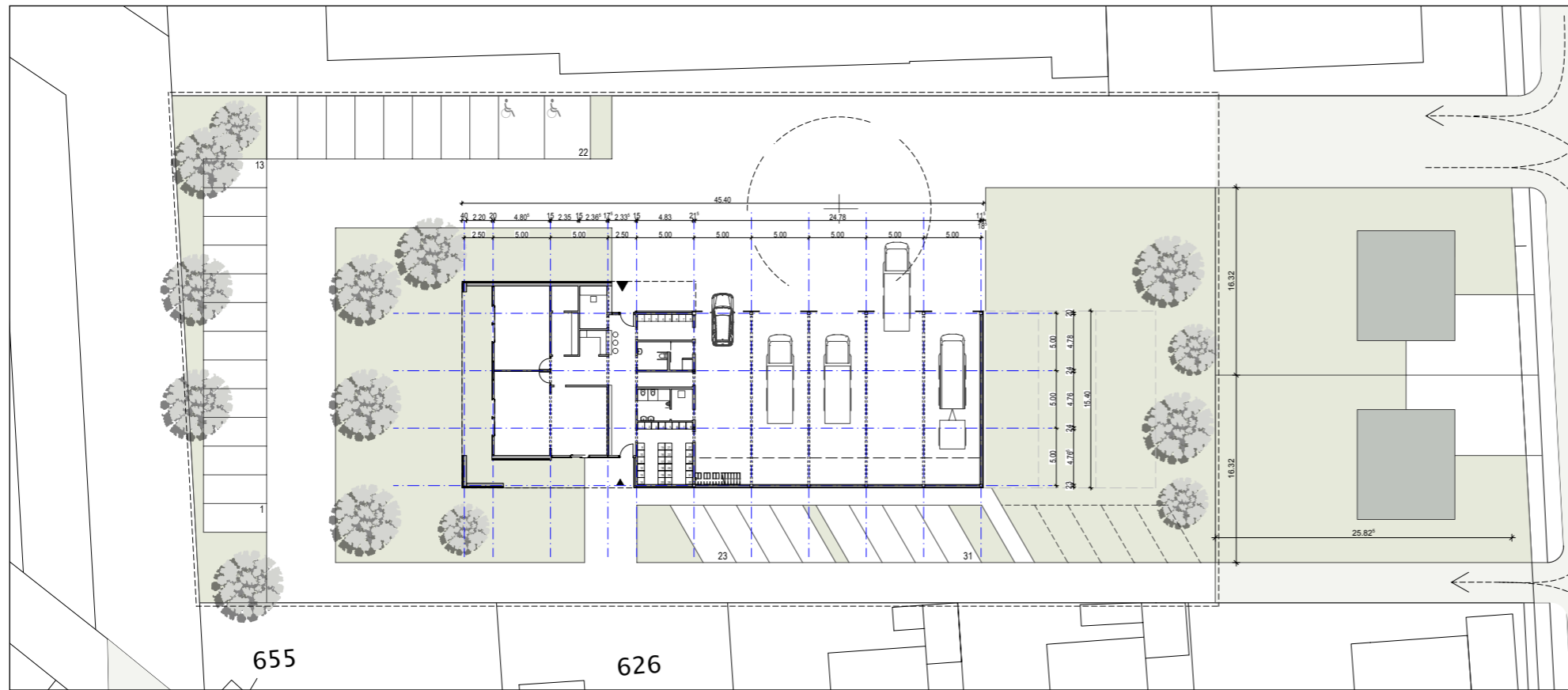
Stand 24.01.2018 – 870 qm

Stand 26.01.2018 – 796 qm

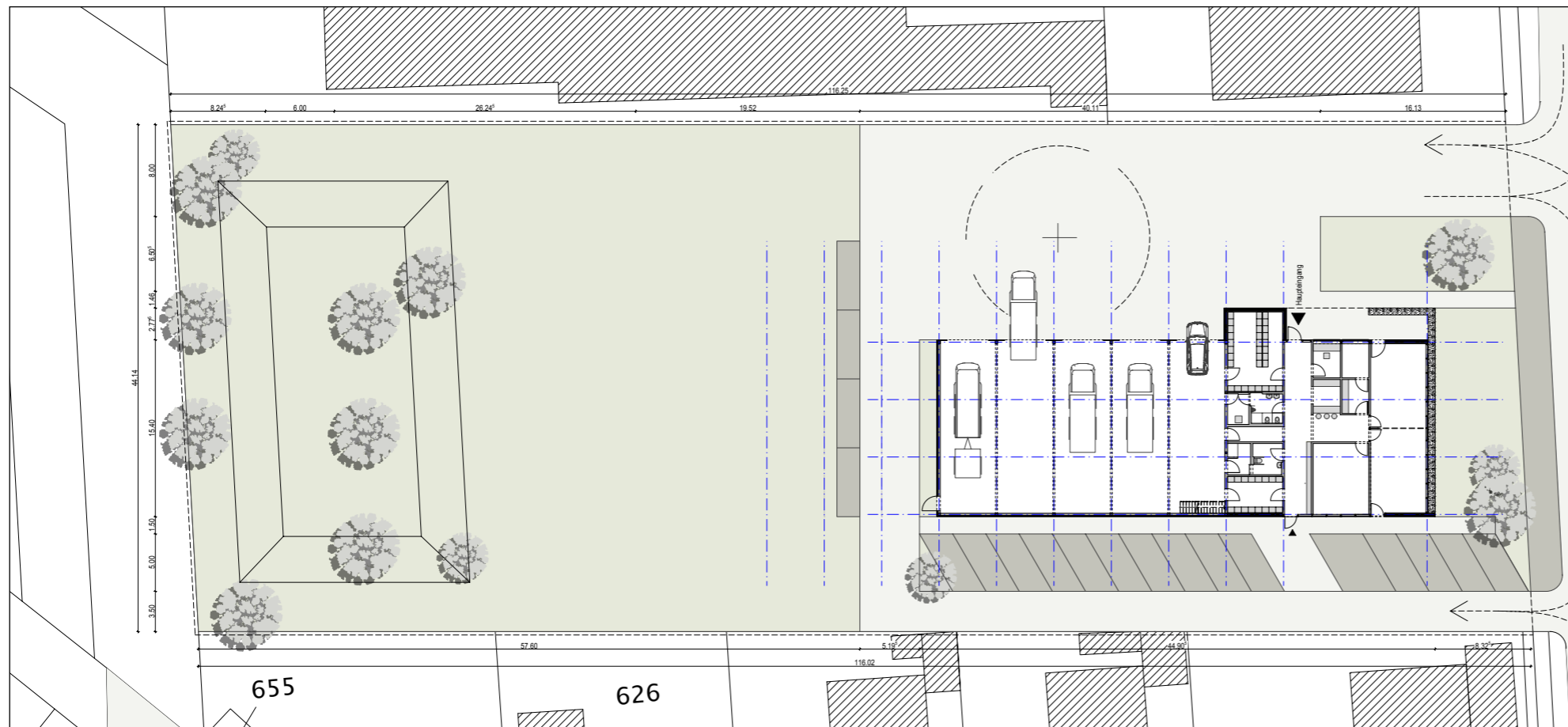
Stand 27.09.2018 – 718 qm



Gemeinde  
Ostbevern



Stand 27.09.2018



Stand 08.11.2018

17.01.2019

PDA PLANUNGSGRUPPE  
DÖRENKÄMPER + AHLING





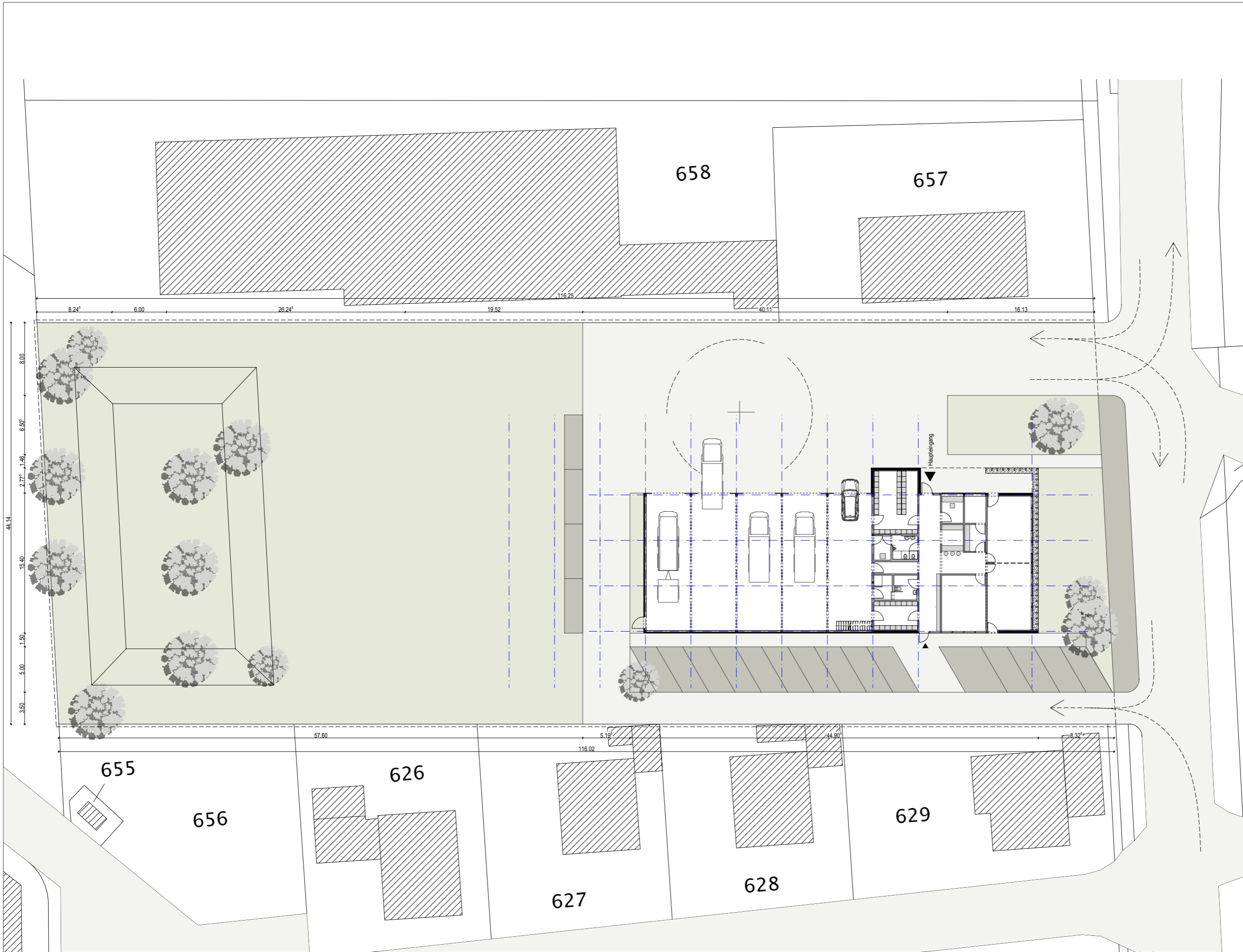
Gemeinde  
Ostbevern

# Entwurfsplanung

17.01.2019

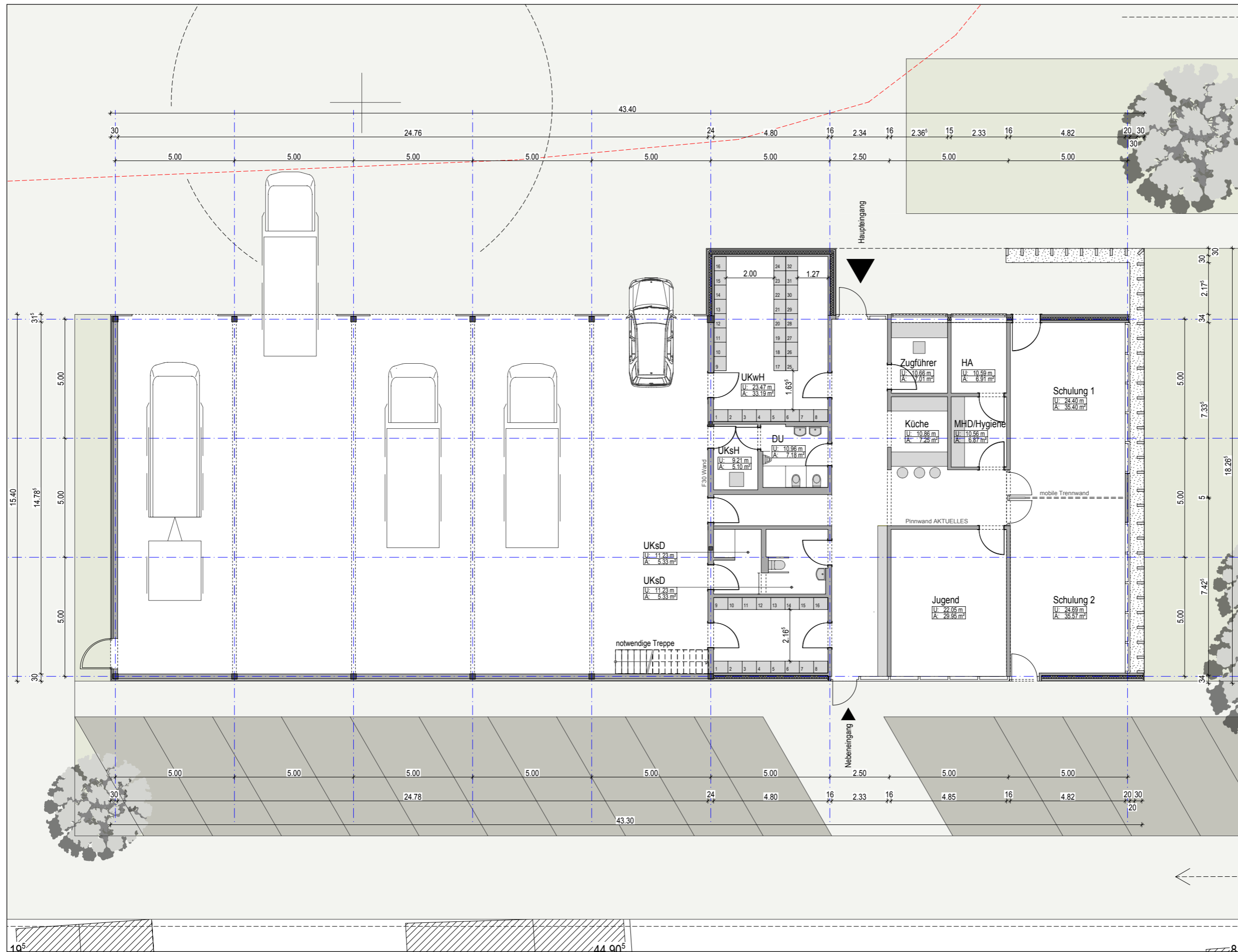


Gemeinde  
Ostbevern



17.01.2019

**PDA PLANUNGSRUPPE**  
DÖRENKÄMPER + AHLING



17.01.2019



Gemeinde  
Ostbevern



Ansicht Süd



Ansicht Nord

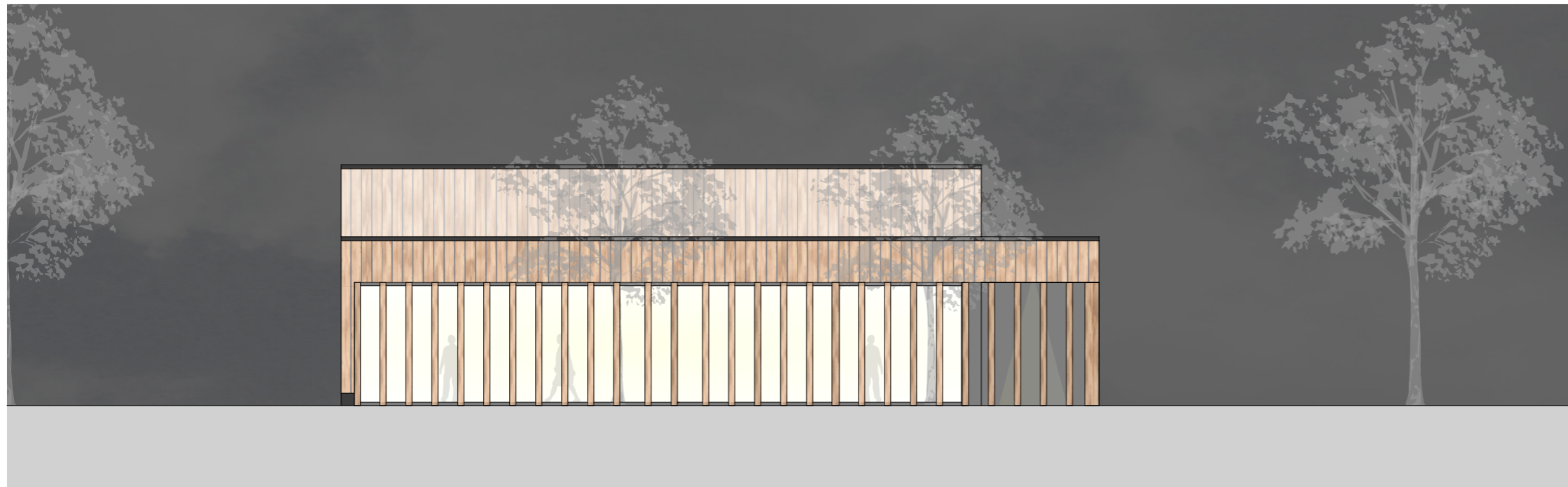
17.01.2019



Gemeinde  
Ostbevern



Ansicht West



Ansicht Ost

17.01.2019



Gemeinde  
Ostbevern

# Holzbau allgemein

17.01.2019



Gemeinde  
Ostbevern



17.01.2019

PDA PLANUNGSRUPPE  
DÖRENKÄMPER + AHLING



Gemeinde  
Ostbevern



17.01.2019

PDA PLANUNGSRUPPE  
DÖRENKÄMPER + AHLING





Gemeinde  
Ostbevern



17.01.2019

PDA PLANUNGSGRUPPE  
DÖRENKÄMPER + AHLING



Gemeinde  
Ostbevern

Herzlichen Dank für Ihre Aufmerksamkeit

17.01.2019